

Quem sabe isso quer dizer amor

Lô Borges, Marcio Borges

Arr. Carlos Veiga Filho

Swing! $\text{♩} = \text{♩}^3$ 



mais vo-cê o - lhou sor - rin-do pra mim — me a-ce - nou — um bei-jo de paz — vi-



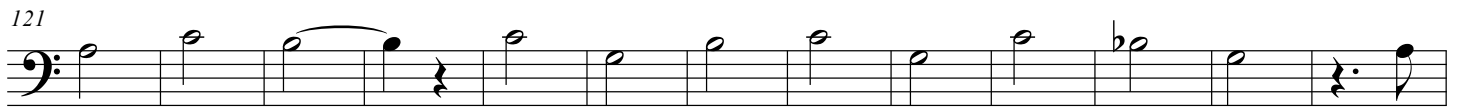
rou mi-nha ca - be - ça eu sim-ples - men-te não con - si-go pa - rar lá fo-ra o di - a



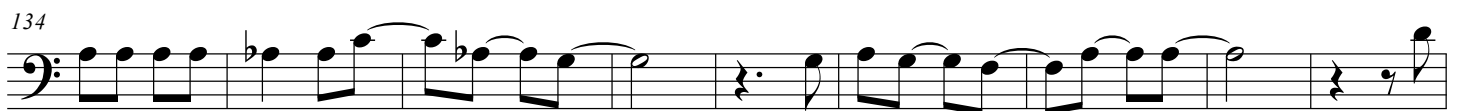
já cla-re-ou — mas se vo - cê qui - ser trans-for-mar — o ri-bei-rão em bra-ço de mar



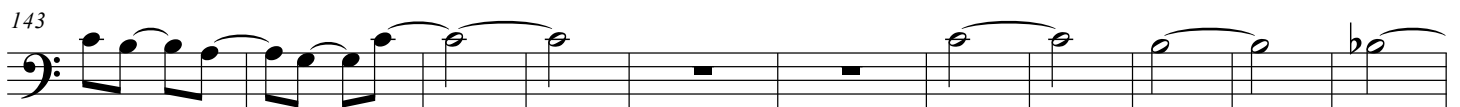
— vo - cê — nas - ce — per - ce - ber meu



co - ra - ção — mun - do sem - pre tu - do va - le quem



sa-be is-so quer di-zer — a - mor — es - tra-da — de — fa - zer — o



so-nho a-con - te - cer — Lá — lá — lá —



— lá — lá — lá — lá — lá — lá — lá — lá —



lá — lá — es - tra-da — de — fa - zer — o so-nho a-con - te - cer

177

A musical staff in bass clef. The first measure contains a half note on the second line (G4). The second measure contains a half note on the second space (A4). A slur connects the two notes. The staff ends with a double bar line.
